



MEN / JACKETS STANLEY HIKES LONG SLEEVE



STJM582

Long sleeve padded jacket

Ripstop

100% Recycled Polyester, 100% Elastomultiester with Sorona (R)
70 GSM

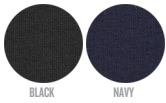
- Set-in sleeve
- Reverse nylon zip at center front with herringbone puller and chin guard
- Side pockets with hidden nylon zip
- Side panels for better shape
- Elastic tape binding at sleeve and bottom hem
- Inside hanger loop in herringbone tape
- Fully quilted
- Inside zip opening for easy decoration

MEDIUM FIT

S M L XL XXL

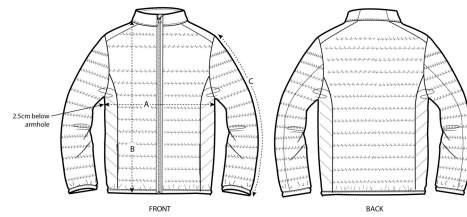
Size guide

COLORS



BLACK

NAVY



SIZES		S	M	L	XL	XXL
A	Half Chest	52.5	55	58	61	64
B	Body Length	68	70	72	74	76
C	Sleeve Length	67.5	69	71.5	72	73.5

Combo options



Stella Walks Long Sleeve

Printing Specifications

Fits all kinds of printing techniques, click [here](#) to get more info.