



UNISEX / PADDED JACKET
TREK

 20 per box

STJU819

Light padded windbreaker

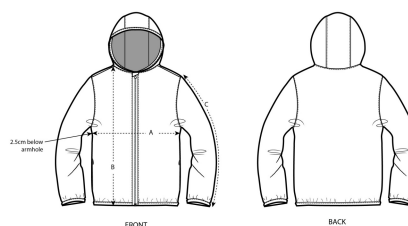
ripstop shell
100% Recycled polyester
70 GSM

- Set-in sleeve
- Double layered hood in self fabric with elastic tape binding
- Nylon zip at center front with herringbone puller and chin guard
- Side pockets with sealed nylon zip
- Elastic tape binding at sleeve hem and bottom hem
- Inside hanger loop in self fabric
- Single topstitching on armholes
- Inside fully quilted
- Inside zip opening for easy decoration

MEDIUM FIT

XS S M L XL XXL

Size guide



SIZES		XS	S	M	L	XL	XXL
A	Half Chest	53.5	56	58.5	61.5	64.5	67.5
B	Body Length	64	66	68	70	72	74
C	Sleeve Length	65.5	68	70	71.5	73	74.5

Printing Specifications

Fits all kinds of printing techniques, click [here](#) to get more info.

Wash similar colours together, no ironing,
wash inside out.
Close all zips before washing.
Reshape while damp, lay flat to dry.

